



# **Project Editor Installation Guide**

**Version 1.0**

## INSTALLATION PROCESS:


#Note If you have an earlier version of P.E, this will be superseded by the latest installation.

Below is a quick walk through on how to install the Project Editor (GUI) software and the necessary Drivers in order to run the program.

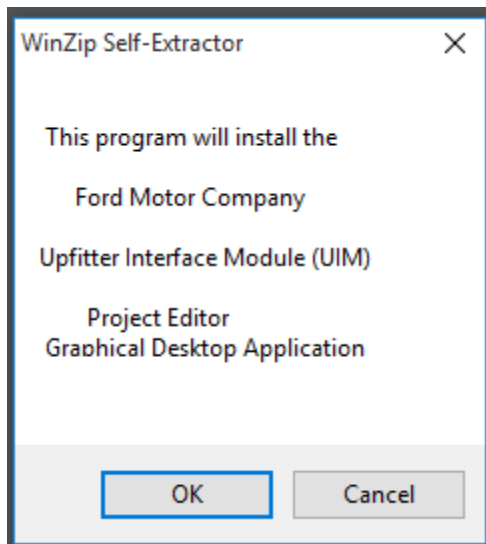
*Note# It is recommended to run Project Editor (P.E) on Windows 7 or 8.*

### Project Editor software

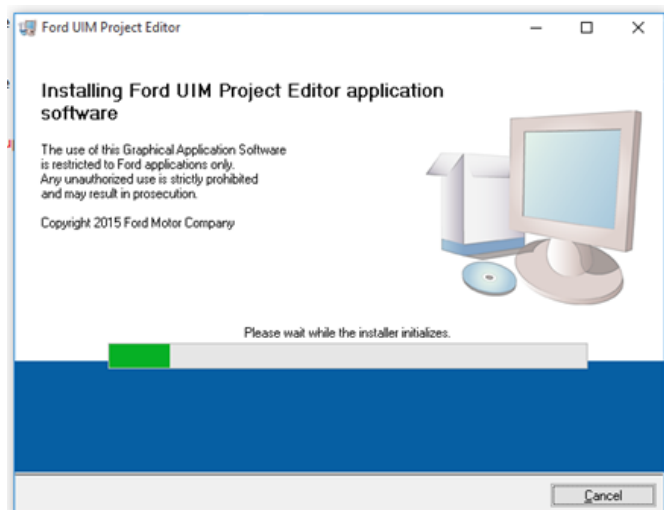
**STEP 1:** Double click the Project Editor installation .exe file

 INSTALL\_Ford\_UIM\_Project\_Editor\_

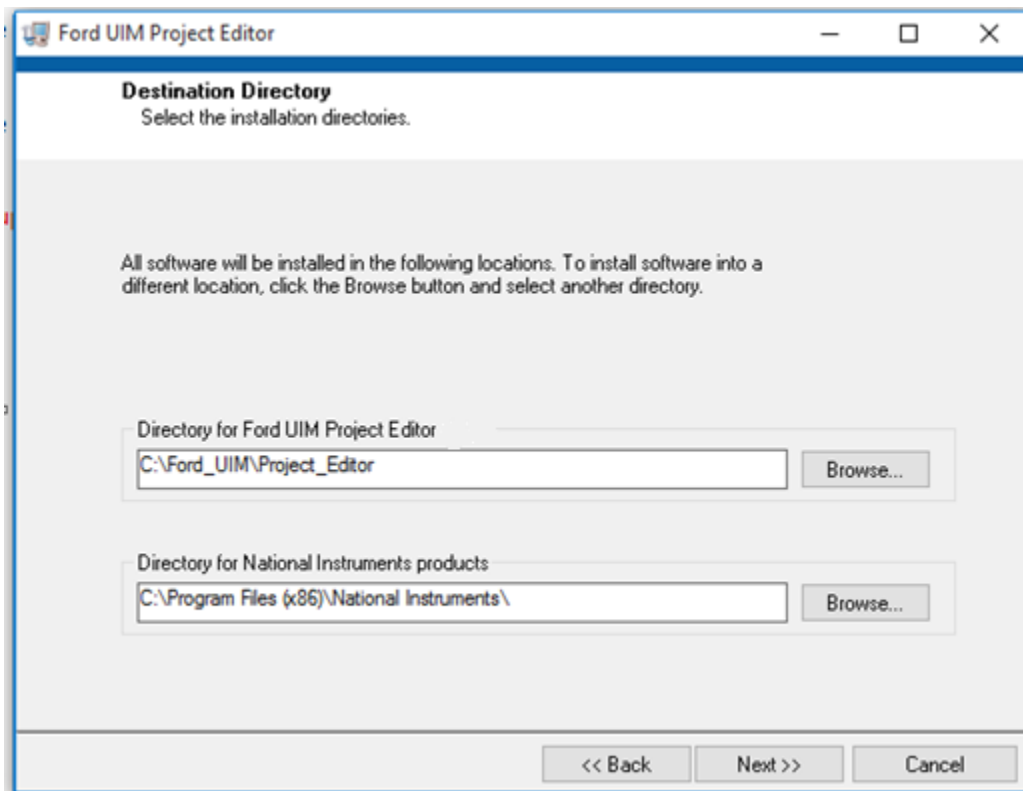
**STEP 2:** When prompted, click “OK” to start the installation process



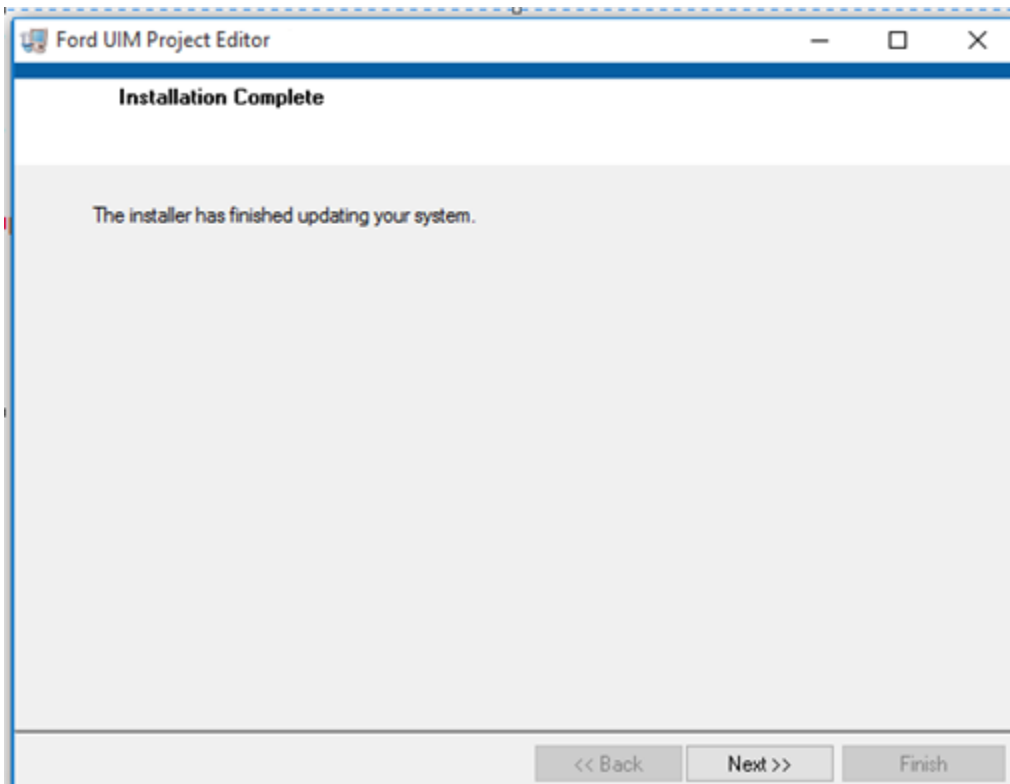
The installation will now begin.



STEP 3: You will be prompted to choose a “Destination Directory” for the installation. It is suggested to use the defaulted directory.



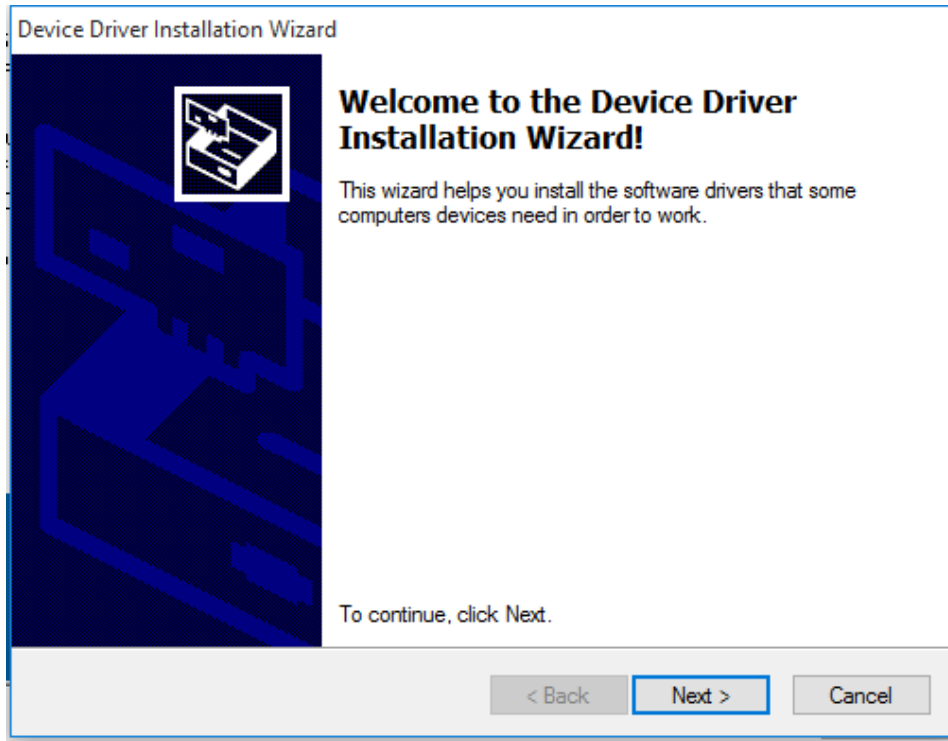
Once the destination has been chosen, click on “Next” to continue the installation process.



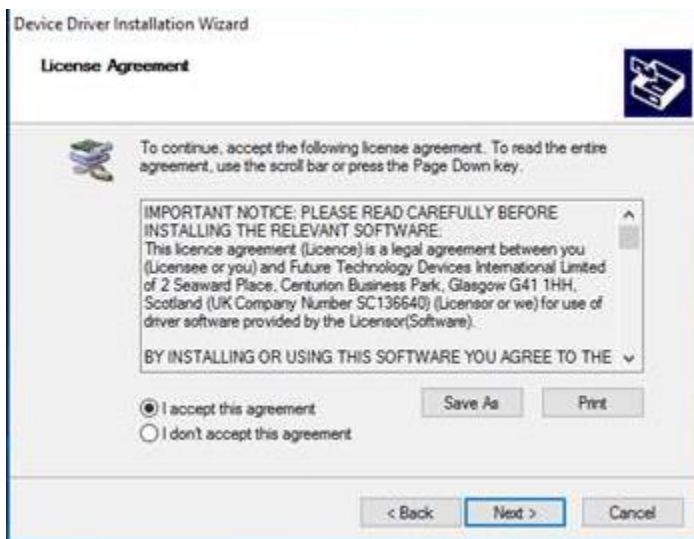
Once the Installation of the Project Editor Software has completed, you will be prompted to install the necessary “Device Driver”.

## Device Drivers

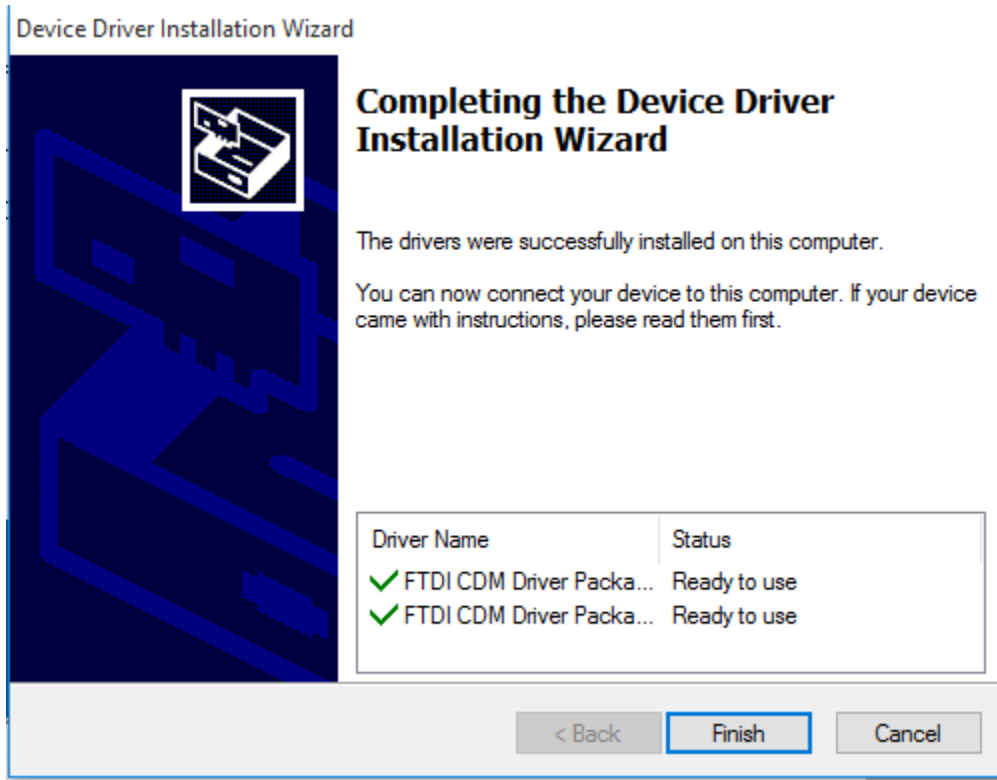
**STEP 4:** When prompted, begin installing the required Device Driver by clicking “Next”.



**STEP 5:** You must accept the “License Agreement” in order to begin the Device Driver installation.

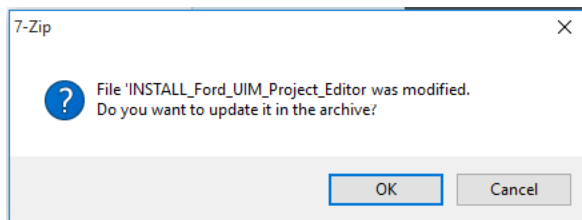


Once the Device Driver install has completed, you will be presented with the below screen.

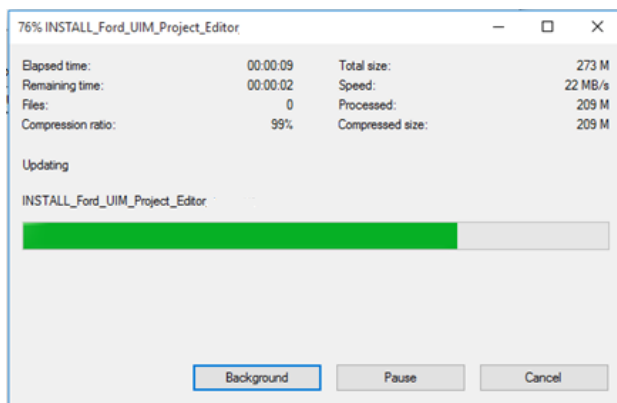


*The below will only be applicable if you already have a previous version on Project Editor already installed.*

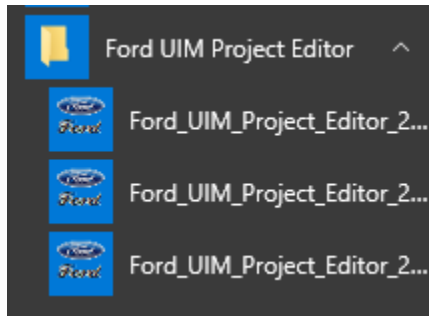
As a result of the Device Driver installation process, you will be prompted to make an update to the Project Editor Install.exe.



**STEP 6:** Click OK to begin the update. The process will run until the progress bar reaches 100%, at which point the entire installation process will be completed.



P.E can be located under the newly created "Ford UIM Project Editor" folder within the Start Menu/All Apps or Programs



If you have more than one version of P.E present on the device, select the latest version to launch the program (as per below).

